

Speaker Mount and Hidden Power

for Sonos® One & One SL

Mounts between studs to any desired location. PN: C7HSA1-W, White, 7' / C7HSA1-B, Black, 7'

An all-in-one solution that provides wall mounting capabilities and hidden power for Sonos One and One SL wireless speakers.

The Adjustable mounting arm can pivot left or right, up or down and rotate to target the sound direction. This allows for a fully customizable installation.

No electrician required! This simple plug-and-play solution requires minimal tools and offers DIY friendly power relocation.

Available in Black or White



Articulating Mount allows for customized install.

Low Profile Jumper

The interconnect easily feeds through 1" diameter holes and past other obstructions in the stud cavity.



Also Available in 15', 25' and 40' lengths and in un-terminated WIPS for direct wiring in electrical boxes.

Power Relocation



- No electrician required!
- Can easily pass through 1" stud hole
- Available in lengths of 7' and 15'
- Contact us for custom lengths

Conforms to STD 514D and Certified CSA STD 22.2 No. 42.1-00
Electrical Rating: 125 VAC, 15 AMPS, 60 Hz
Meets UL 817 & CSA#22.2#21; Interconnect meets UL 2256, 2459
Meets NEC 2014 Article 400.7 (A)(11)
Patented with multiple patents pending.
All rights reserved. Sonos is a registered trademark of Sonos, Inc.,



www.midlite.com

115 Wordell St. Fall River, MA 02721

Tel: 508.676.5169 / Toll Free: 800.606.5169 / Fax: 508.861.0105



Speaker Mount and Hidden Power

for Sonos® One & One SL

Mounts between studs to any desired location. PN: C7HSA1-W, White, 7' / C7HSA1-B, Black, 7'

An all-in-one solution that provides wall mounting capabilities and hidden power for Sonos One and One SL wireless speakers.

The Adjustable mounting arm can pivot left or right, up or down and rotate to target the sound direction. This allows for a fully customizable installation.

No electrician required! This simple plug-and-play solution requires minimal tools and offers DIY friendly power relocation.

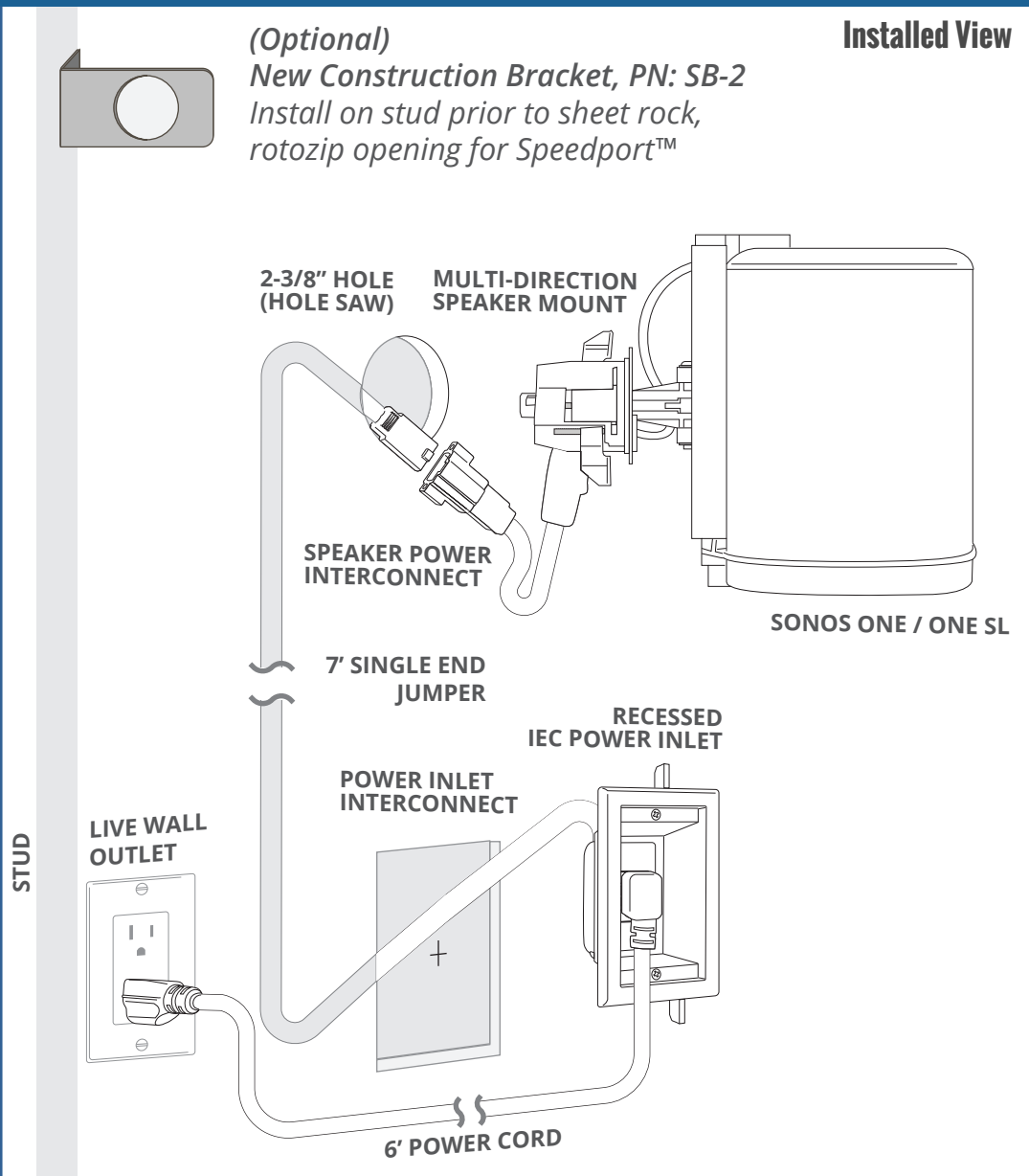
For new construction projects, add on our metal **Speedport™ New Construction Bracket**. Simply fasten to a stud and once the sheet rock has been laid, the bracket allows installers to use a rotozip opening to ensure proper size and placement of the hole.



PN: SB-2

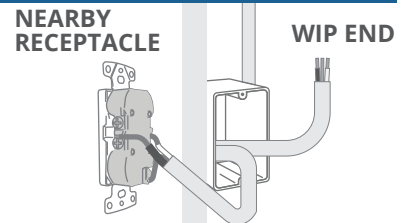
(Optional)
New Construction Bracket, PN: SB-2
Install on stud prior to sheet rock,
rotozip opening for Speedport™

Installed View



Also Available in 15', 25' and 40' lengths and in non-terminated WIPS for direct wiring in electrical boxes.

Visit www.midlite.com to learn more.



Conforms to STD 514D and Certified CSA STD 22.2 No. 42.1-00
Electrical Rating: 125 VAC, 15 AMPS, 60 Hz
Meets UL 817 & CSA#22.2#21
Interconnect meets UL 2256, 2459
Meets NEC 2014 Article 400.7 (A)(11)
Patented with multiple patents pending.
All rights reserved. Sonos is a registered trademark of Sonos, Inc.



www.midlite.com

115 Wordell St. Fall River, MA 02721

Tel: 508.676.5169 / Toll Free: 800.606.5169 / Fax: 508.861.0105

